

WPH Classroom Audio/Visual Instructions

Extend Computer Displays onto the Classroom Projector/LCD:

Step by step instructions for extending your computers PowerPoint slideshow onto the classroom projector and LCD.



WPH Classroom Audio/Visual Instructions

Benefits of extended displays with speaker notes:

An extended display is essentially a second monitor that can be used by presenters who are connected to the Rossier Classroom A/V system.

Presenters can view speaker notes along with a preview of their next slide, while the classroom attendees can only see the full screen PowerPoint.

*** After performing the setup operations once, the BYOD should automatically reproduce the settings for future presentations. ***



WPH Classroom Audio/Visual Instructions

Benefits of extended displays with speaker notes:

Instructors can keep their BYOD monitor private.

Students will not see open tabs, open email or possibly sensitive information from the instructors BYOD displayed on the projector and LCD.



WPH Classroom Audio/Visual Instructions

Extend display in your BYOD settings:

First, presenters must plug the BYOD into the classroom system with the cables located at the lectern.

*** This process can be performed by plugging into a secondary monitor of your own. ***



WPH Classroom Audio/Visual Instructions

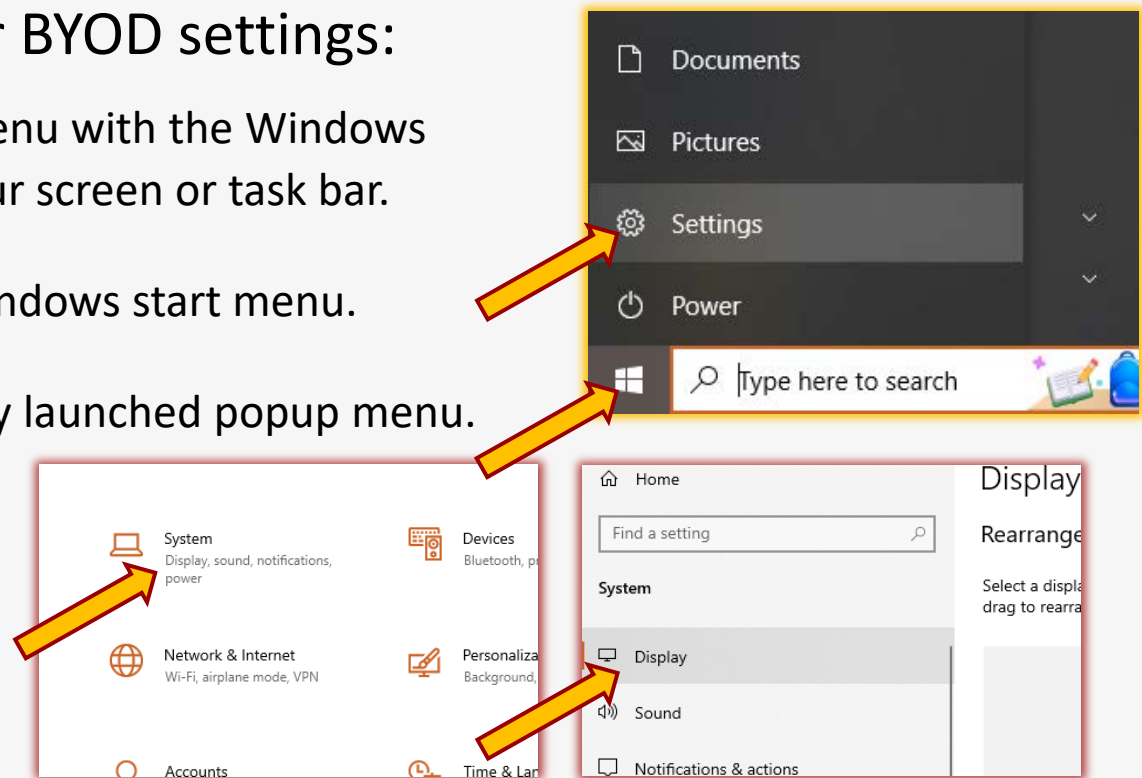
Extend display in your BYOD settings:

Access the Windows start menu with the Windows icon in the bottom left of your screen or task bar.

Choose Settings from the Windows start menu.

Select System from the newly launched popup menu.

Now click Display.



WPH Classroom Audio/Visual Instructions

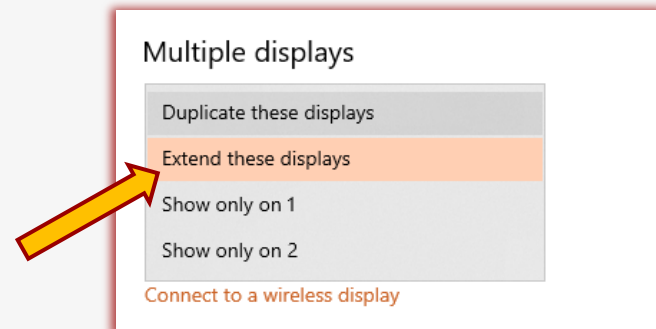
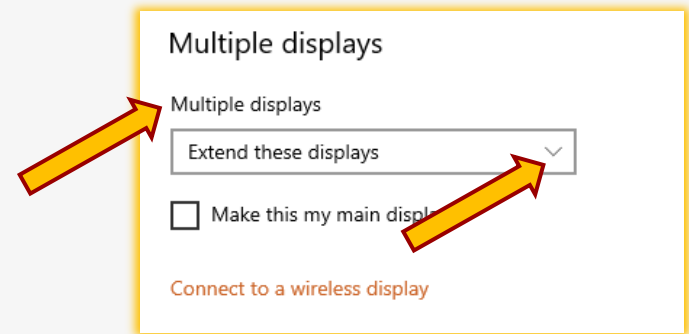
Extend display in your BYOD settings:

Scroll down the page and find “Multiple displays.”

Click the down caret to reveal several choices.

Select “Extend these displays” from the list.

Your computer will now treat the classroom displays as secondary monitors.



WPH Classroom Audio/Visual Instructions

Work between multiple displays:

Drag windows from your BYOD screen to the right, to place them on the classroom displays and show entirely different content.

*** Can't find your cursor? Look on the secondary monitor, it's likely over there awaiting commands. ***

Move your cursor back to the far left to see it on your BYOD home screen.

You can also choose to work entirely from the secondary screen.



WPH Classroom Audio/Visual Instructions

On the PowerPoint ribbon display menu:

Select the “Slide Show” option from the top of the screen in the ribbon display menu.

Check the box next to “Use Presenter View”

Click the pulldown caret and choose either “Automatic” or “Monitor 2 Crestron”

Choosing “Automatic” should set PowerPoint to extend onto any secondary monitor that you connect with, not just the Crestron in WPH.



WPH Classroom Audio/Visual Instructions

PowerPoint speaker notes and presenter view:

PowerPoint will now display two different views.

The view on your BYOD should include speaker notes and a preview of the next slide in your presentation.

The view on the classroom displays should be only the full screen slideshow.

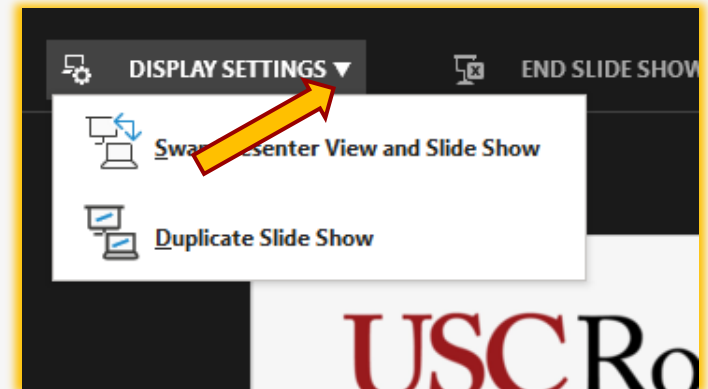


WPH Classroom Audio/Visual Instructions

PowerPoint speaker notes and presenter view:

If the speaker notes and full screen presentation become reversed, you can swap them from the PowerPoint program.

On the top of the screen showing the presenter view, select the down arrow next to Display Settings.

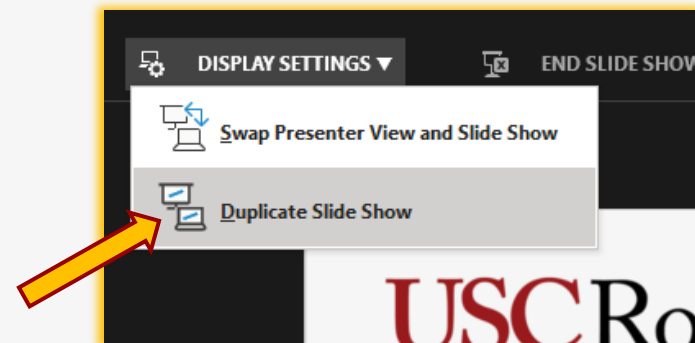
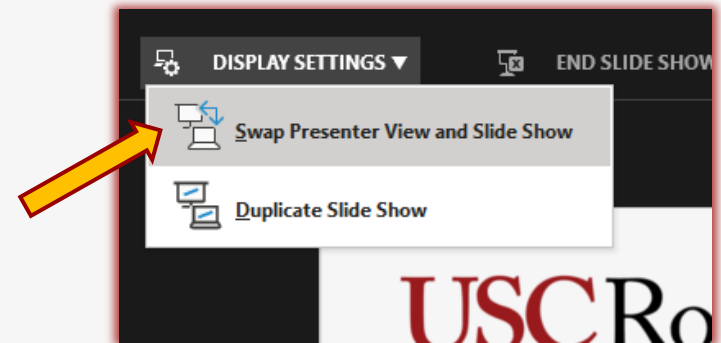


WPH Classroom Audio/Visual Instructions

PowerPoint speaker notes and presenter view:

Presenters can now choose to swap the presenter view and full screen slide show.

Presenters could also choose to show only the full screen slide show on both the BYOD and class displays by selecting “Duplicate Slide Show.”





Rossier MIS Classroom A/V Support

In-Person Training and A/V Tech Support:

Hours:

- Monday through Friday - 9:00am until 5:00pm

Video training and downloadable step by step instructions:

- Rossier Support Wiki – rossierportal.usc.edu

Contact:

- Email - rsoesupport@rossier.usc.edu
- Call Rossier Classroom Support at (213) 740-9800.

Scan QR code



MIS Training and Support Wiki